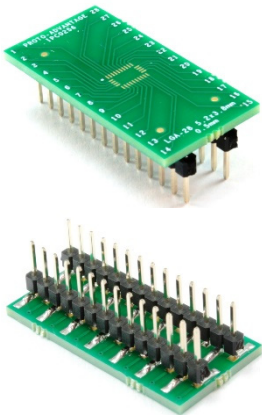
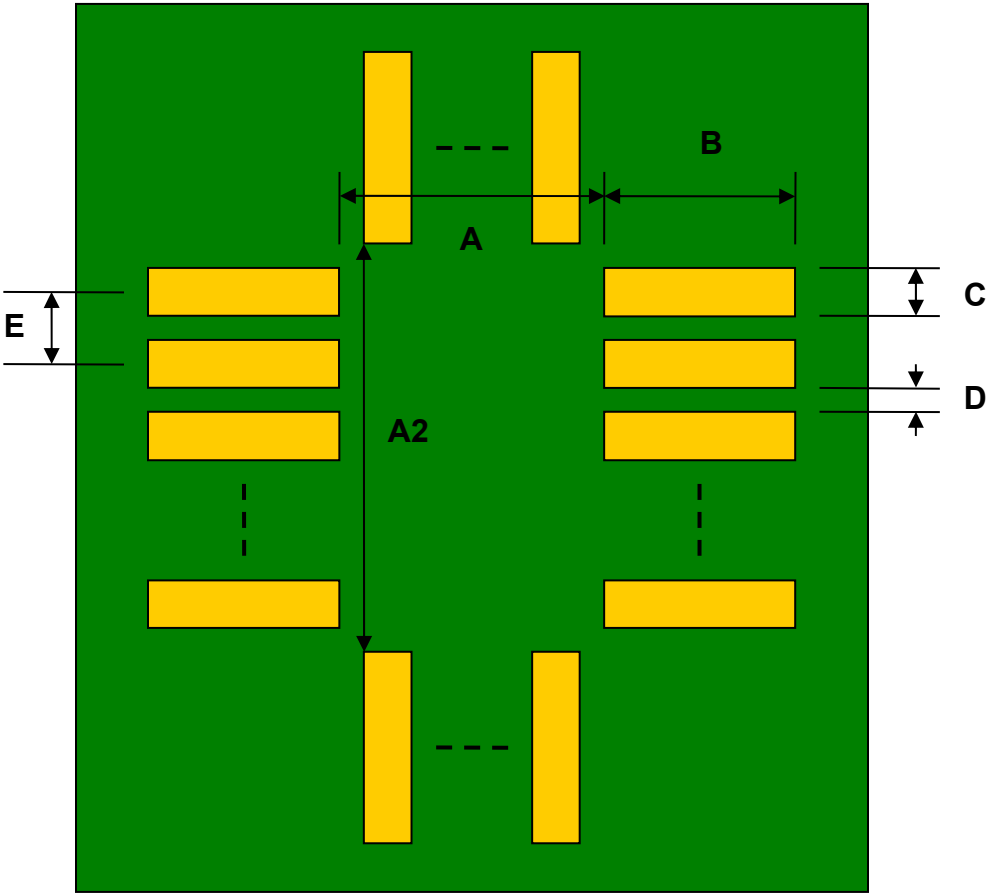


LGA-28 to DIP-28 SMT Adapter (0.5 mm pitch, 5.2 x 3.8 mm body)



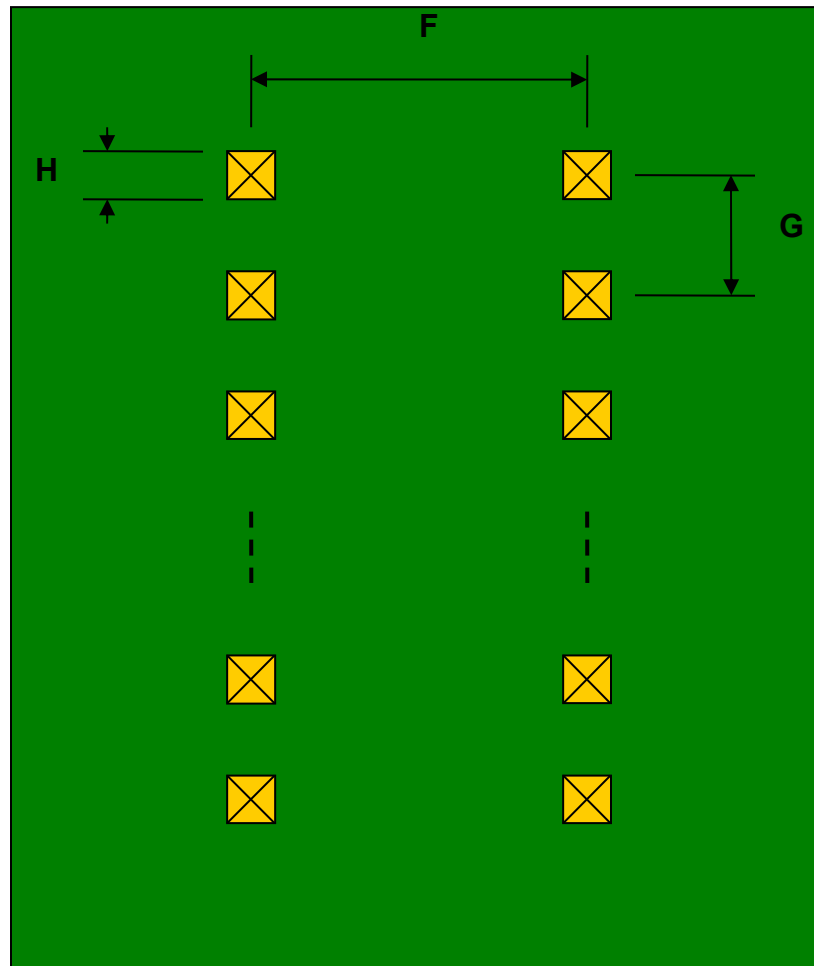
REF.	DIMENSIONS					
	mm			inches		
	MIN.	TYP.	MAX.	MIN.	TYP.	MAX.
A		4.00				
A2		2.625				
B		0.80				
C		0.25				
D		0.25				
E		0.50				
F					0.300	
G					0.100	
H					0.025	

Top View (SMT Footprint)



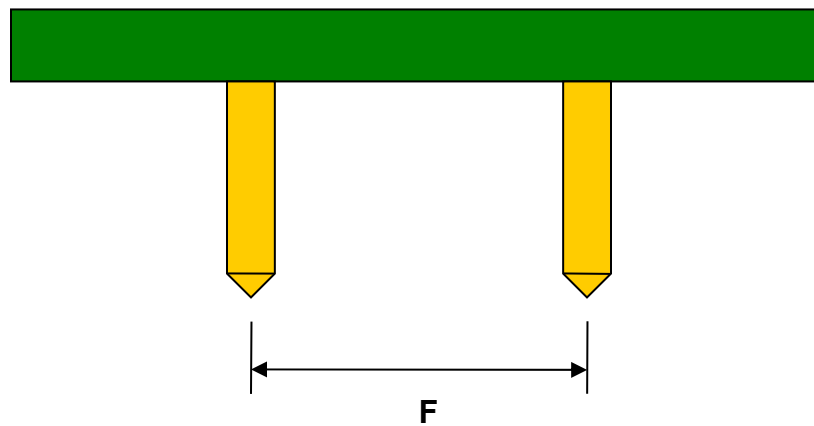
(Representative drawing only - not to scale)

**Bottom View (DIP Pins)**



(Representative drawing only - not to scale)

**Side View (DIP Pins)**



(Representative drawing only - not to scale)

# Mouser Electronics

Authorized Distributor

Click to View Pricing, Inventory, Delivery & Lifecycle Information:

[Chip Quik:](#)

[IPC0256](#)